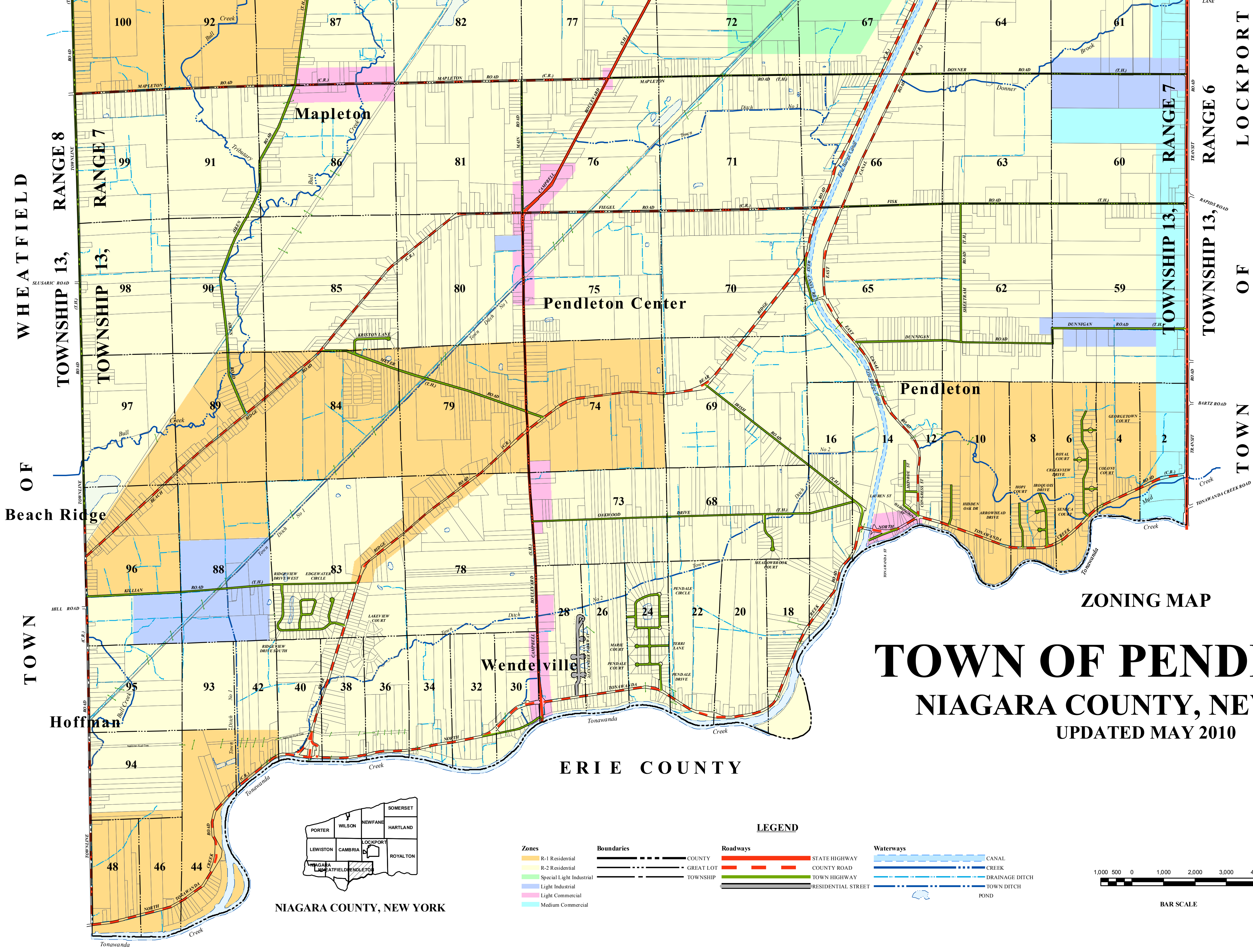


TOWN OF CAMBRIA TOWN OF LOCKPORT

TOWNSHIP 14, RANGE 7

TOWNSHIP 13, RANGE 7

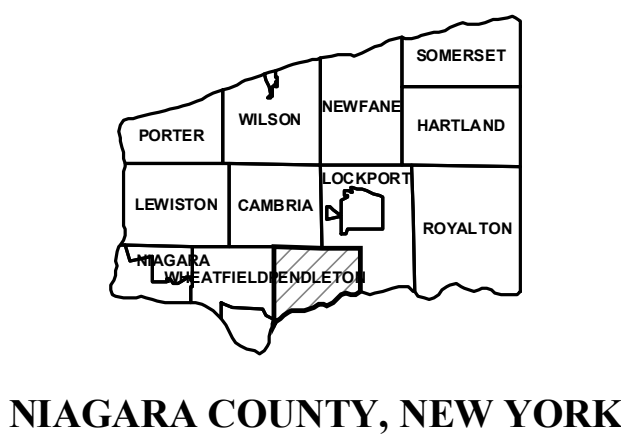


ZONING MAP

TOWN OF PENDLETON

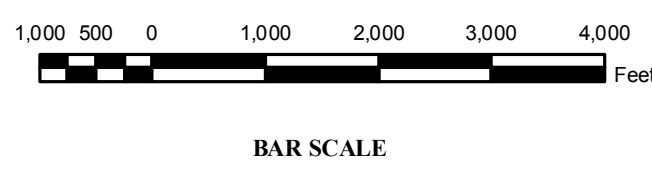
NIAGARA COUNTY, NEW YORK

UPDATED MAY 2010



NIAGARA COUNTY, NEW YORK

Zones	Boundaries	Roadways	Waterways
R-1 Residential	--- COUNTY	STATE HIGHWAY	--- CANAL
R-2 Residential	--- GREAT LOT	--- COUNTY ROAD	--- CREEK
Special Light Industrial	--- TOWNSHIP	--- TOWN HIGHWAY	--- DRAINAGE DITCH
Light Industrial		--- RESIDENTIAL STREET	--- TOWN DITCH
Light Commercial			--- POND
Medium Commercial			



BAR SCALE



CRA Infrastructure & Engineering, Inc.

File Number: 630644(ZONING)GIS-BU002.mxd