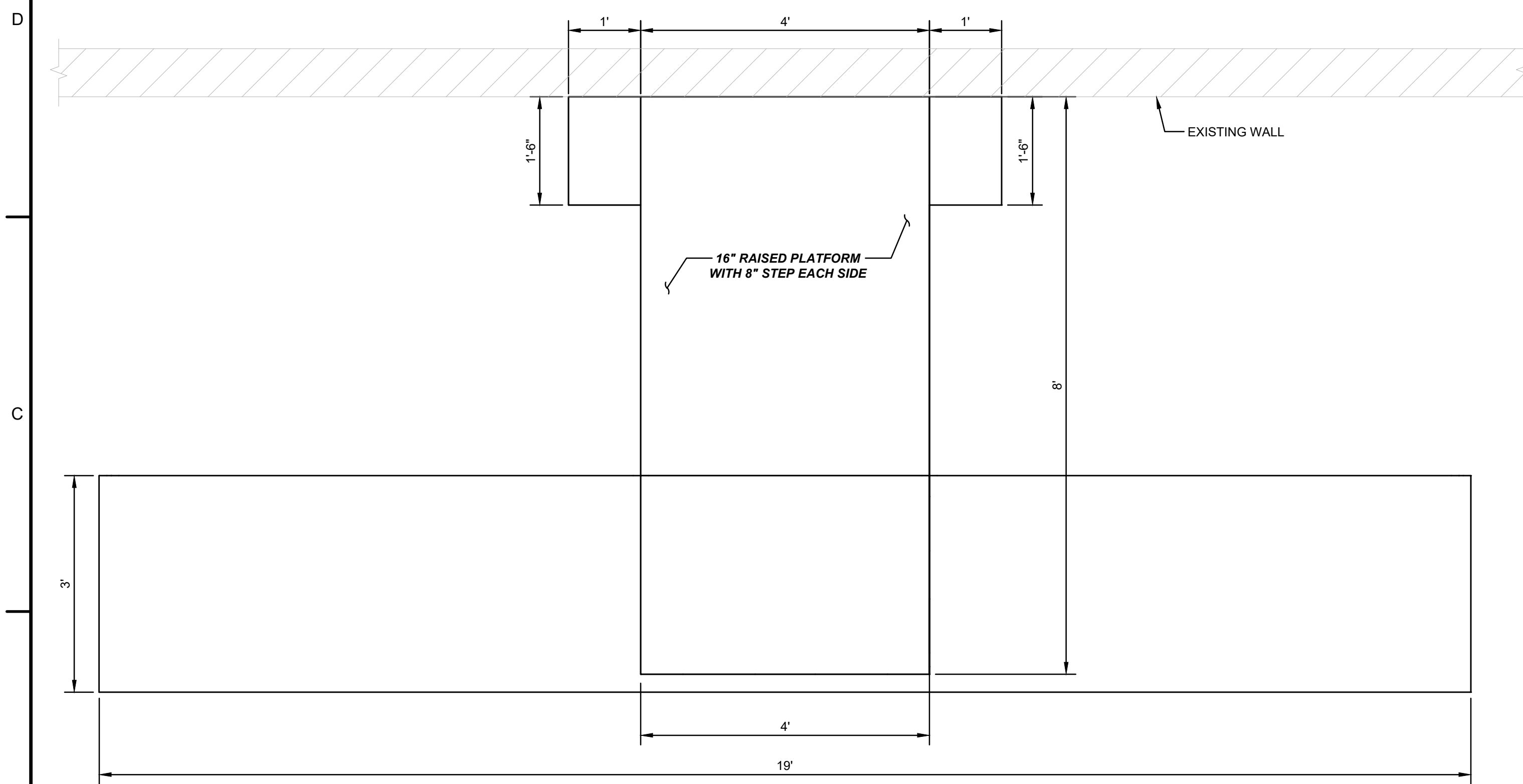
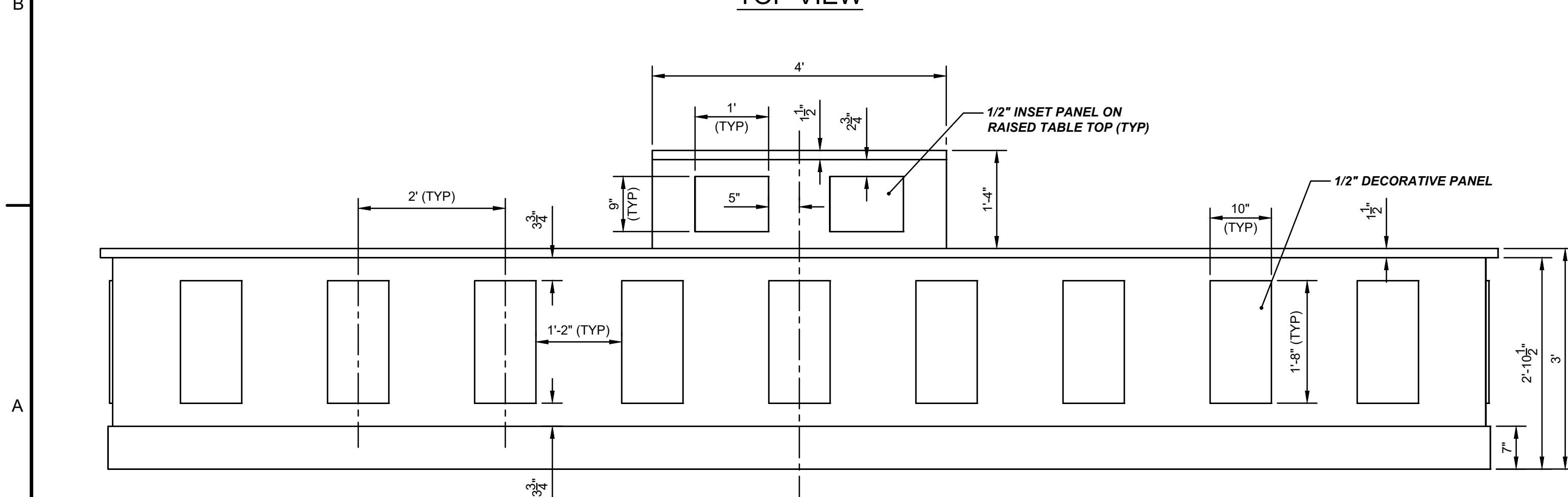


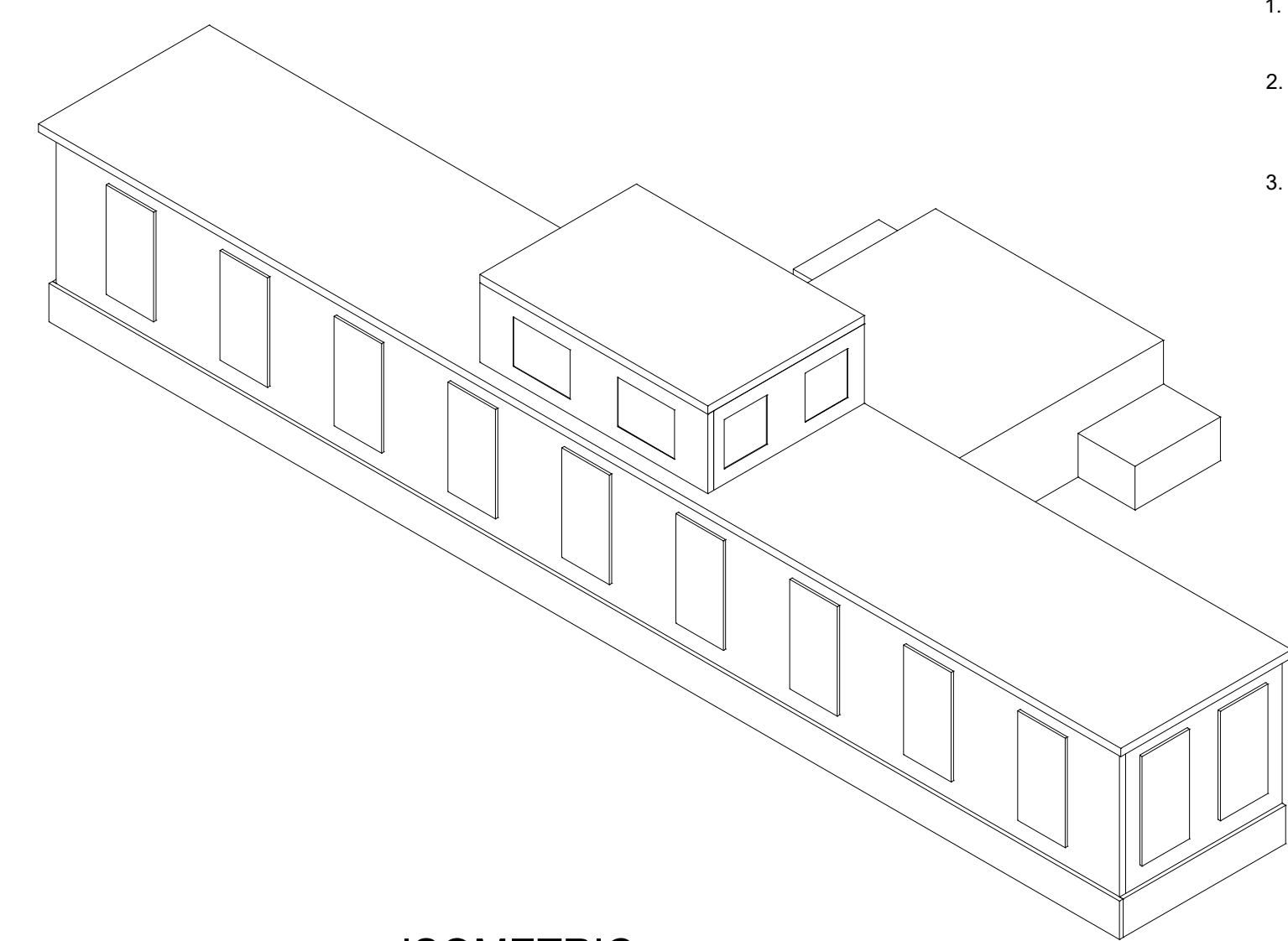
BACK ELEVATION



TOP VIEW



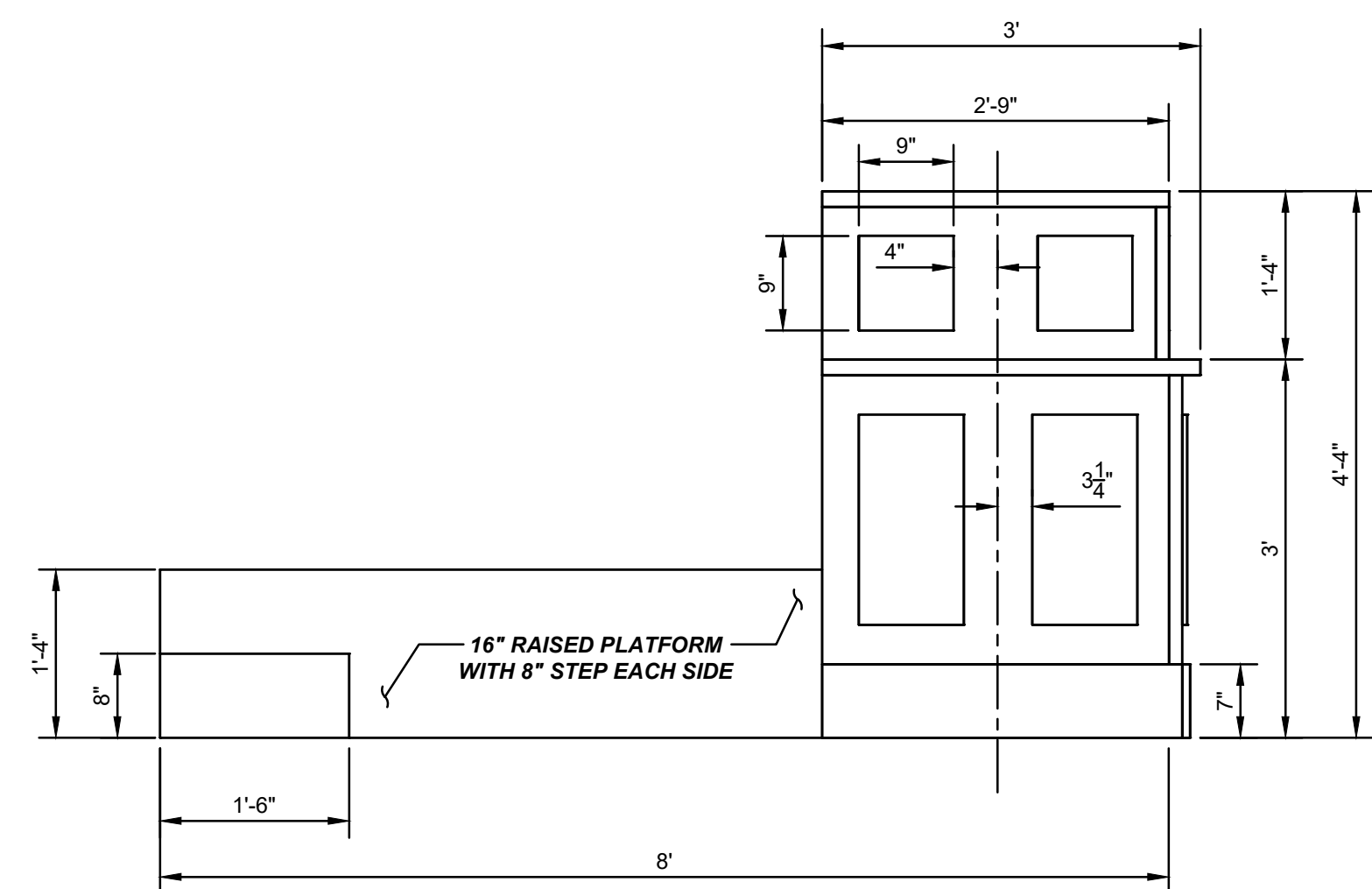
FRONT ELEVATION



ISOMETRIC



EXISTING CONDITIONS



LEFT SIDE ELEVATION

- NOTES:
1. DESK AND DESK TOP MATERIAL TO BE WHITE OAK OR APPROVED EQUAL.
  2. RAISED PLATFORM SHALL BE REMOVABLE AND NOT PERMANENTLY FIXED.
  3. RAISED TABLE TOP TO INCLUDE ELECTRIC OPERATORS TO ALLOW FOR RAISING AND LOWING OF TABLE TOP.

**NUSSBAUMER & CLARKE, INC.**  
 EST. 1933  
 ENGINEERS AND SURVEYORS

3556 Lake Shore Road, Suite 500 | Buffalo, NY 14219  
 (716) 827-8000 | (716) 826-7958 fax  
 www.nussclarke.com

**COURT BENCH IMPROVEMENTS PROJECT**  
 TOWN OF PENDLETON, NEW YORK  
**BENCH PLAN AND ELEVATIONS**

REVISIONS		
No.	DESCRIPTION	DATE

NUSSBAUMER & CLARKE, INC.  
 A CORPORATION REGISTERED TO PRACTICE PROFESSIONAL ENGINEERING & LAND SURVEYING IN THE STATE OF NEW YORK  
 CERTIFICATE NO. 027

UNAUTHORIZED ALTERATION OR ADDITION TO THIS ENGINEERING DRAWING IS A VIOLATION OF SECTION 7209, PROVISION 2 OF THE NEW YORK STATE EDUCATION LAW.

PROJECT NUMBER: 22J1-0113A  
 DATE: APRIL 2024  
 DRAWN BY: CRR  
 DESIGNED BY: DMB  
 CHECKED BY: DMB  
 APPROVED BY: DMB  
 SCALE: AS NOTED

1" = 1 INCH

SHEET No. 1 OF 1

**A-501**